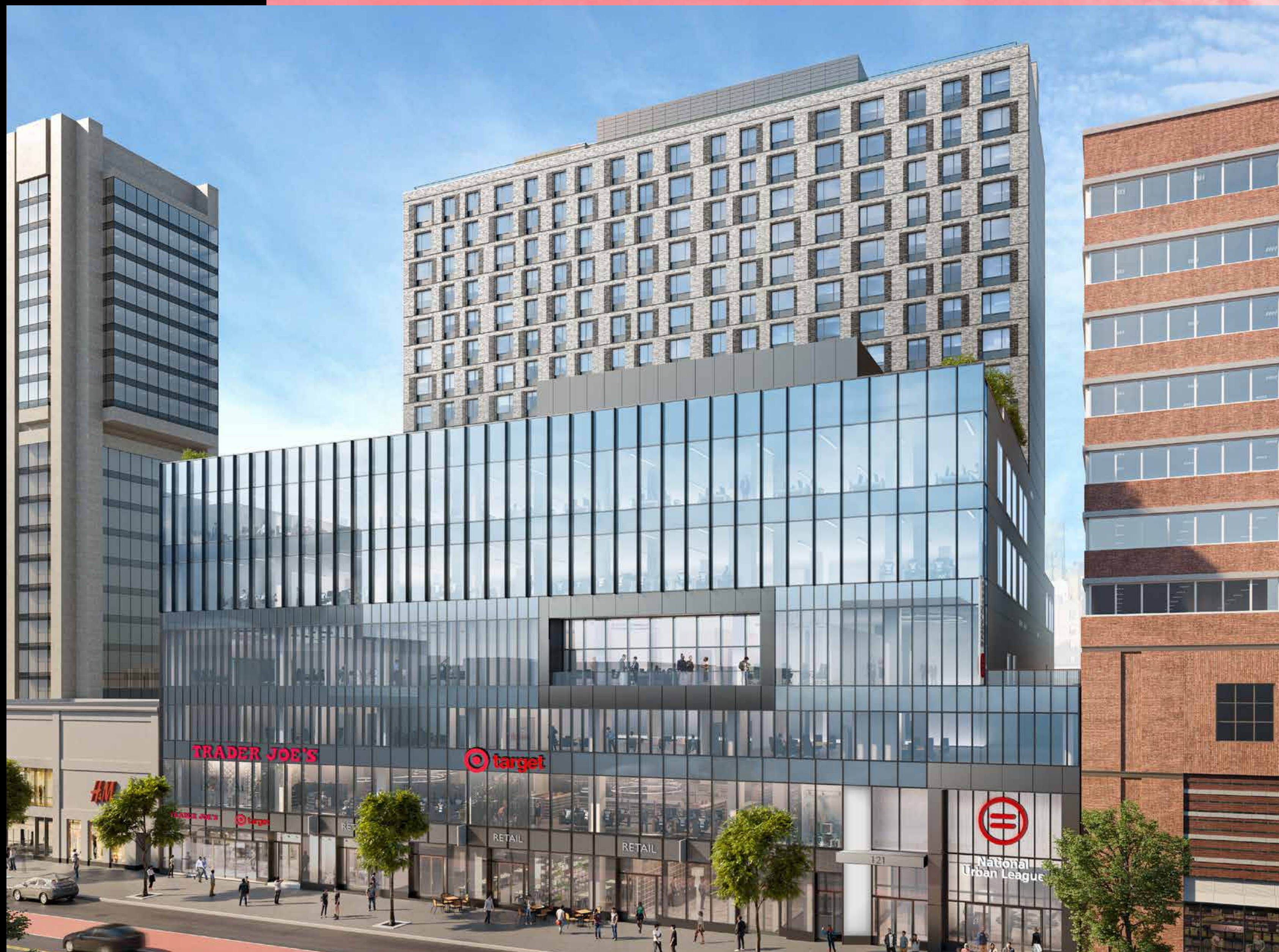
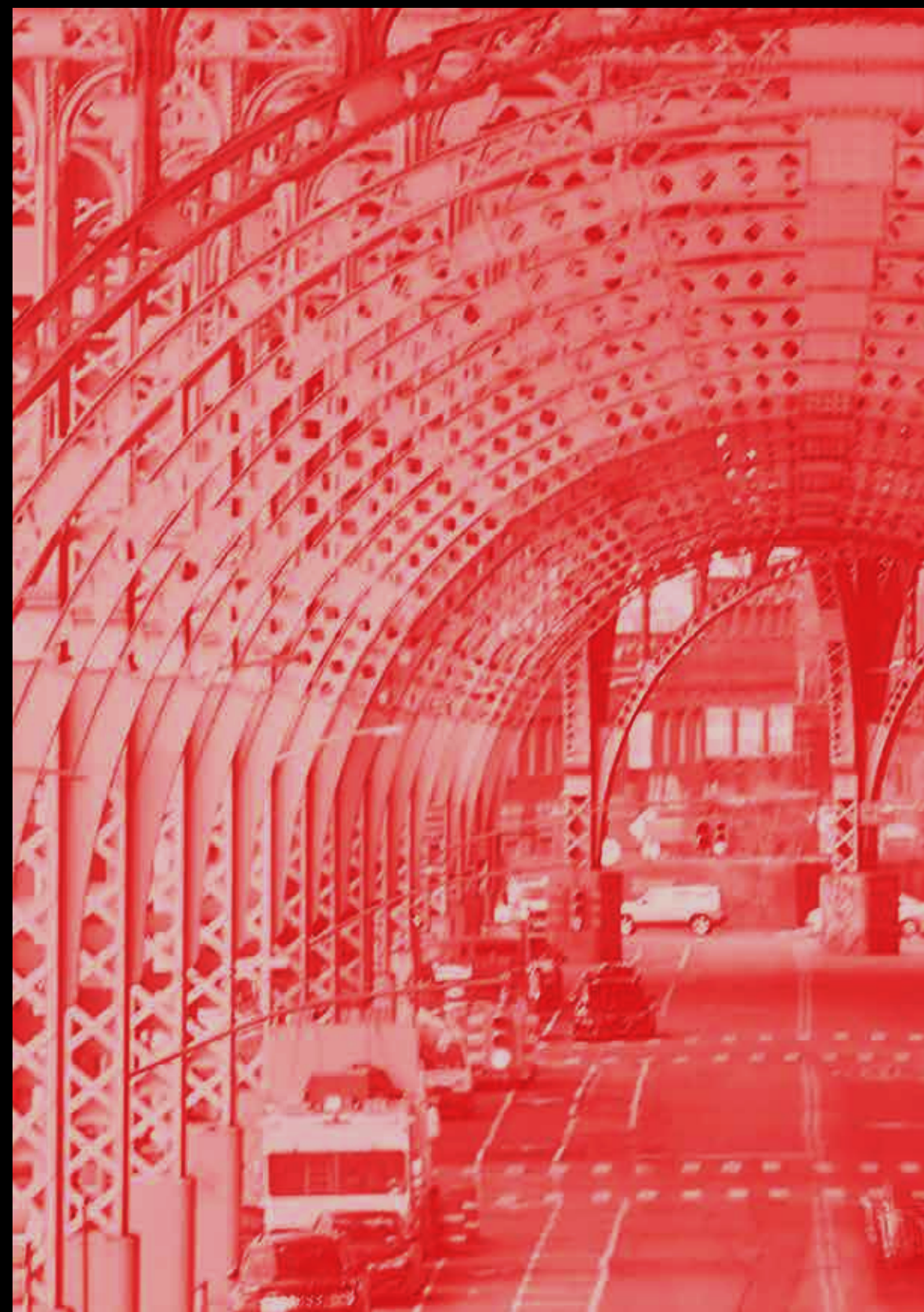


# 121W 125TH



# BRING YOUR PASSION *to* HARLEM

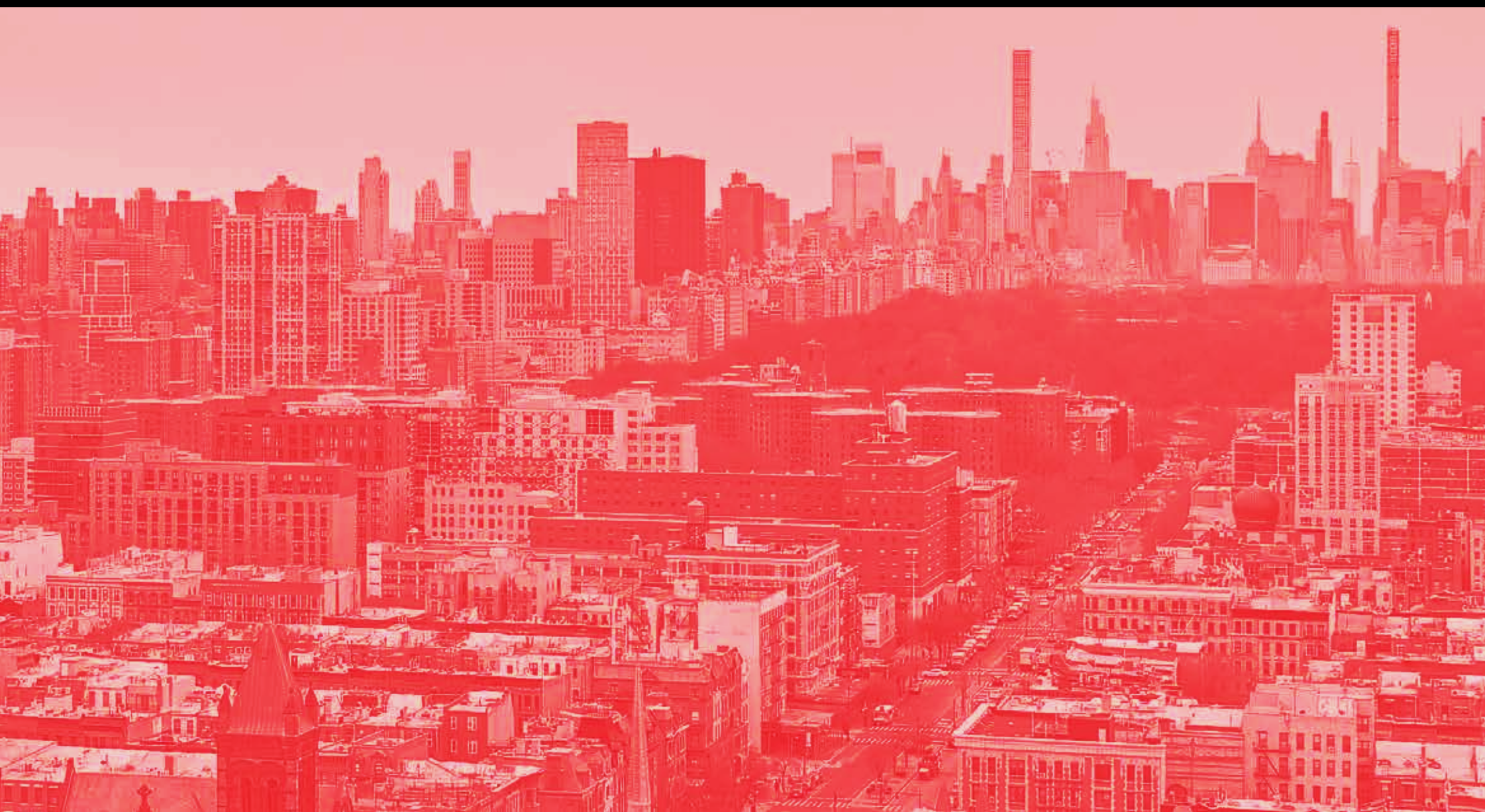
**Every facet** of your work day comes alive in Central Harlem. 121 West 125th is your place to be inspired by the surrounding energy and activity — Harlem's lively atmosphere meets contemporary workspaces, an expansive terrace meets iconic views, and privacy meets neighborhood connectivity. Your path to limitless success begins at 121 West 125th.



# WORK *at* HARLEM SPEED

---

**121 West 125th** was made possible after years of collaboration between those in the private and public/non-profit sectors. This development represents a significant economic development effort that brings elevated workday opportunities to the Harlem community. Welcome to Central Harlem, the beating heart of the city that positions and inspires you to be a part of something bigger.





Central Harlem stands out as New York City's most vibrant neighborhood. Here, commerce and culture collide with dazzling retail and cuisine options around every corner. The famed 125th Street is a hub for creatives and professionals to explore new possibilities, surrounded by an impressive list of respected, future-minded organizations.

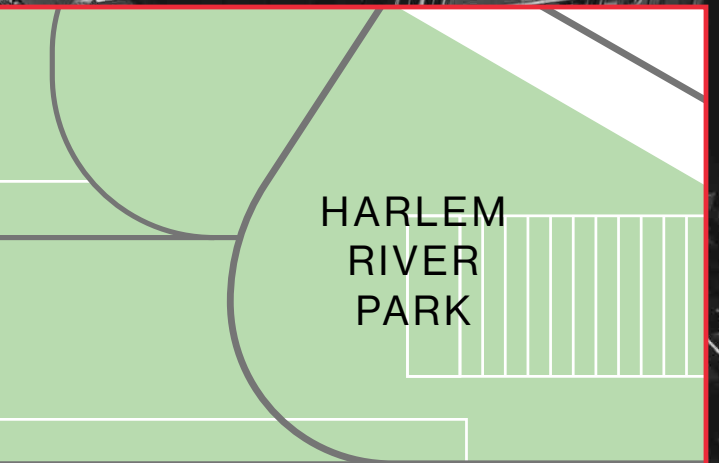


- ☞ FOOD & DRINK
- 🏛️ ARTS & CULTURE
- 🛍️ RETAIL
- 🏋️ FITNESS
- 🎓 UNIVERSITIES

🎓 City College of New York

5-MIN WALK RADIUS

30+ RESTAURANTS within a 5-min walk



HARLEM RIVER PARK

121W 125TH

The National Jazz Museum in Harlem

☞ Maison Harlem

Cantina Taqueria  
Corner Social

W 127TH ST

The Langston Hughes House

☞ Blink Fitness

Apollo Theater

☞ Red Rooster Ginny's Supper Club

☞ ☞ ☞ ☞ ☞ ☞ ☞ FedEx

H&M



☞ Starbucks

Shake Shack

The National Black Theatre

Duane Reade

☞ ☞ ☞ ☞ ☞

GAP

The Cliffs at Harlem

Planet Fitness

Studio Museum Harlem

Bath & Body Works

Whole Foods

☞ ☞ Just Salad

W 125TH ST

☞ ☞ ☞ ☞

☞ Uptown Veg

☞ ☞ Sister's Caribbean Cuisine

☞ 125th St Library

🎓 Columbia University

🎓 Barnard College

☞ Angel of Harlem

☞ ☞ Long Gallery Harlem

Harlem Haberdashery

Indian Summer

MARCUS GARVEY PARK

Richard Rodgers Amphitheater

☞ ☞ Thai BKK

Harlem Repertory Theatre

MANHATTAN AVE  
FREDERICK DOUGLASS BLVD  
ST NICHOLAS AVE

Room 623 Harlem's Speakeasy Jazz Club

ADAM CLAYTON POWELL JR BLVD

35+ RETAIL STORES within a 5-min walk

MALCOLM X BLVD

☞ ☞ W 121ST ST

☞ ☞ Settepani

Archer & Goat

5TH AVE

MADISON AVE

PARK AVE

LEXINGTON AVE

Harlem Art Park

3RD AVE

☞ ☞ Sliced

- CITIBIKE
- PARKING

# 121W 125TH

5-MIN WALK RADIUS

**125 St**  
A·B·C·D

**125 St**  
2·3

**9 min walk**  
TO HARLEM-125TH STREET  
METRO NORTH STATION

**125 St**  
4·5·6·Q

**6 min drive**  
TO HARLEM RIVER DRIVE

**7 min walk**  
TO A, B, C, & D TRAINS

**10 min walk**  
TO 4, 5, & 6 TRAINS

**8 min drive**  
TO HENRY HUDSON PKWY  
(1.1 MILES)

Planned 2nd Ave  
Subway Extension

**10 min walk**  
TO 4, 5, & 6 TRAINS

MANHATTAN AVE  
FREDERICK DOUGLASS BLVD  
ST NICHOLAS AVE

ADAM CLAYTON POWELL JR BLVD

MALCOLM X BLVD

W 123RD ST

W 121ST ST

W 127TH ST

W 125TH ST

MARCUS GARVEY PARK

5TH AVE

MADISON AVE

PARK AVE

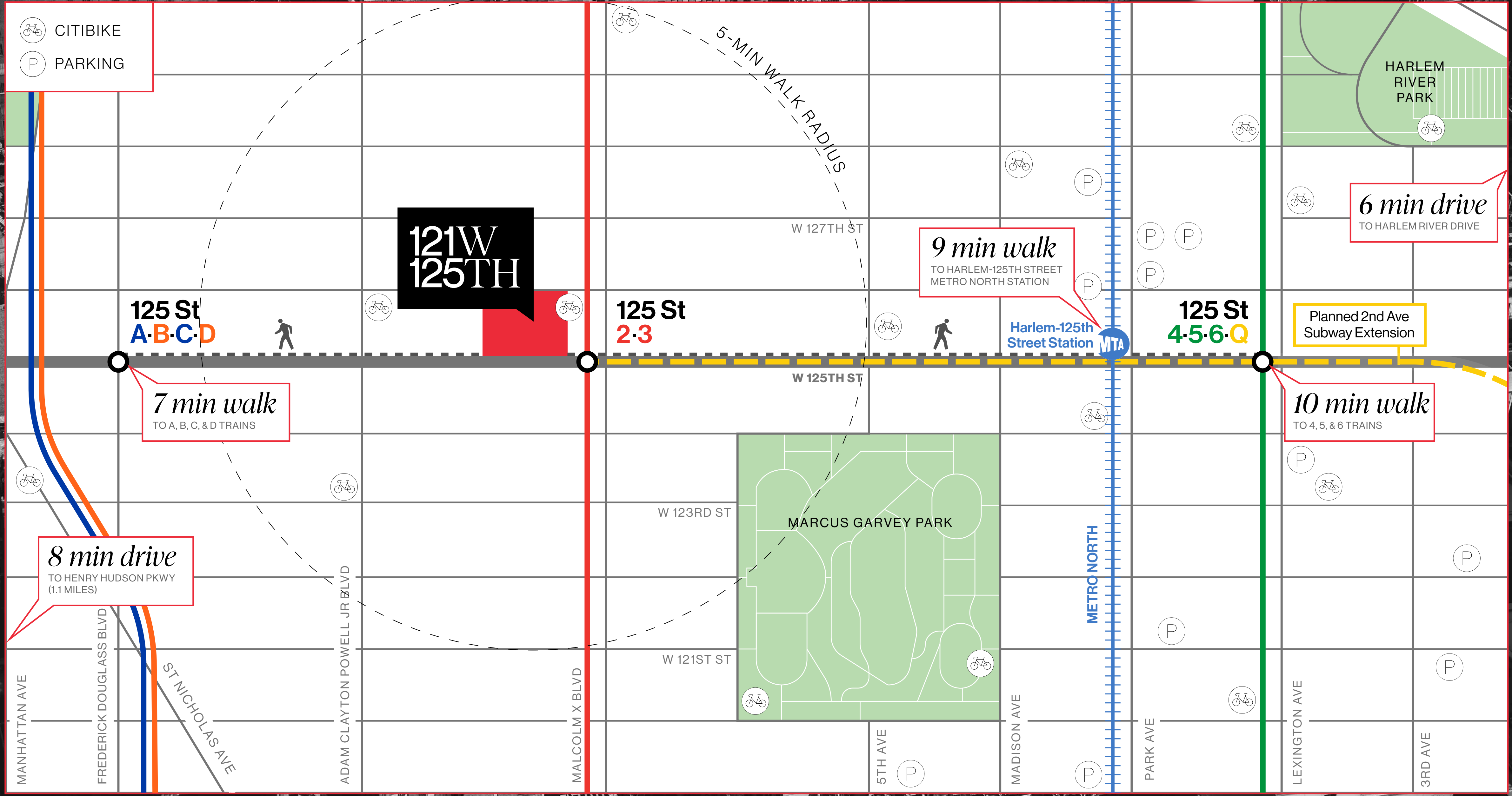
LEXINGTON AVE

3RD AVE

HARLEM RIVER PARK

Harlem-125th  
Street Station MTA

METRO NORTH

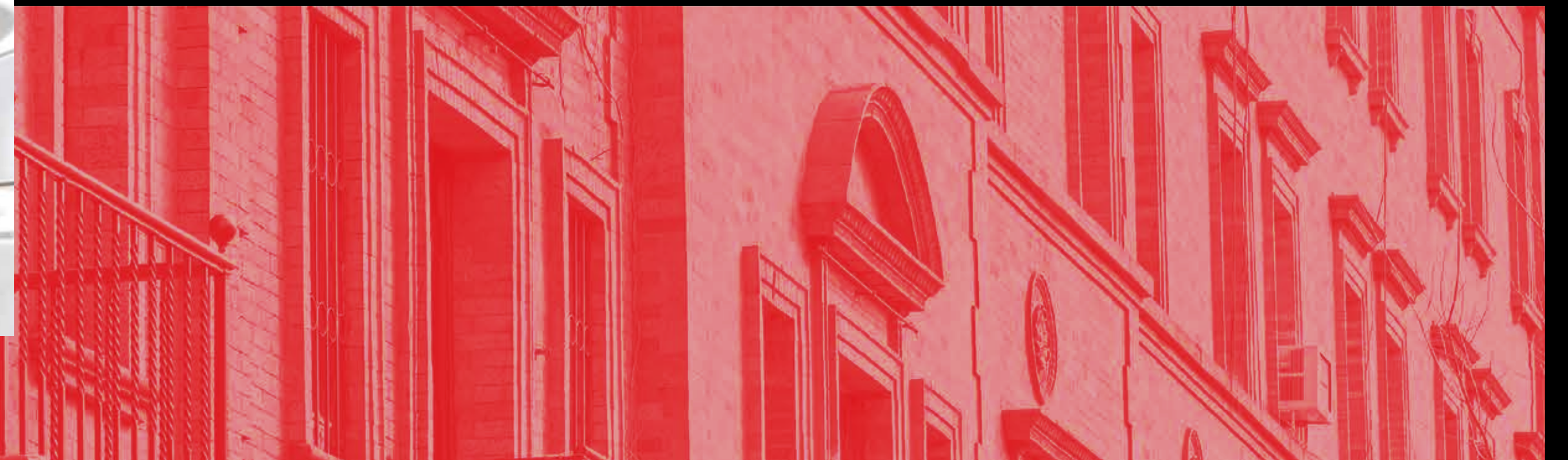


# MAXIMIZE *your* WORKDAY



## HQ Opportunity

- 90,000 SF Unprecedented Class A Office
- Private Lobby Entrance with Dedicated Elevators
- 7,500 SF Terrace
- Expansive Floor Plates with Open Layouts
- Prominent Location in Harlem's Commercial Corridor
- Floor-to-Ceiling Windows
- Unobstructed Manhattan Views
- 14' - 16' Ceilings





## On-Site Retail

- 90,000 SF of Best-in-Class Retail
- Committed Tenants Include: Target, Trader Joe's, Pandora, Sephora

## Change-Making Neighbors

- National Urban League Headquarters
- The Urban Civil Rights Museum
- Schomburg Center for Research in Black Culture
- The Studio Museum in Harlem





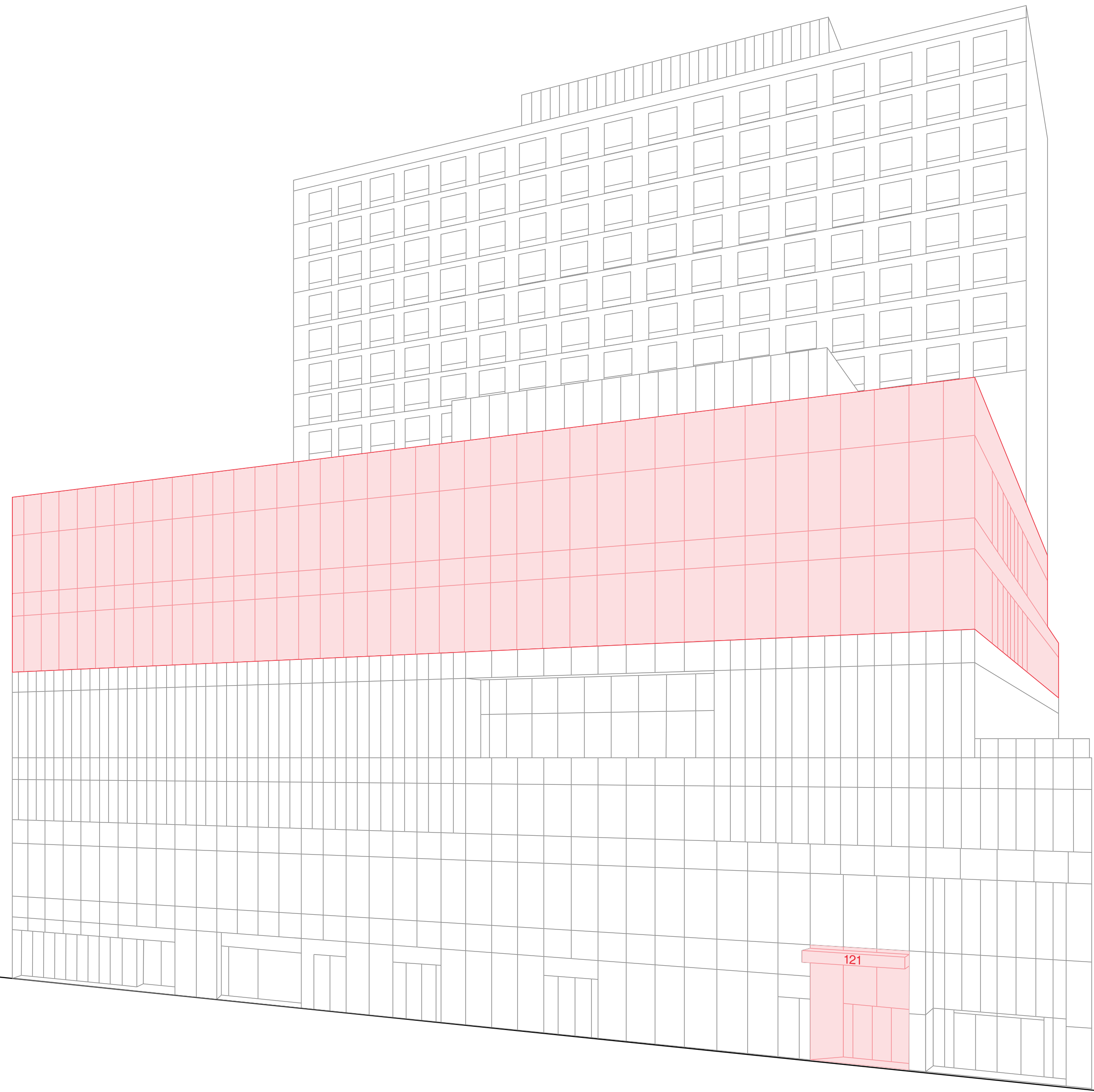
FPO: Awaiting updated rendering



Office Lobby Rendering

Interior Rendering





- 11
- 10
- 9
- 8
- 7
- 6
- 5
- 4
- 3
- 2
- 1

# DESIGNED *for* HIGH IMPACT

Private Lobby  
Entrance  
with Dedicated Elevators

52,000 SF  
Available on 5th Floor

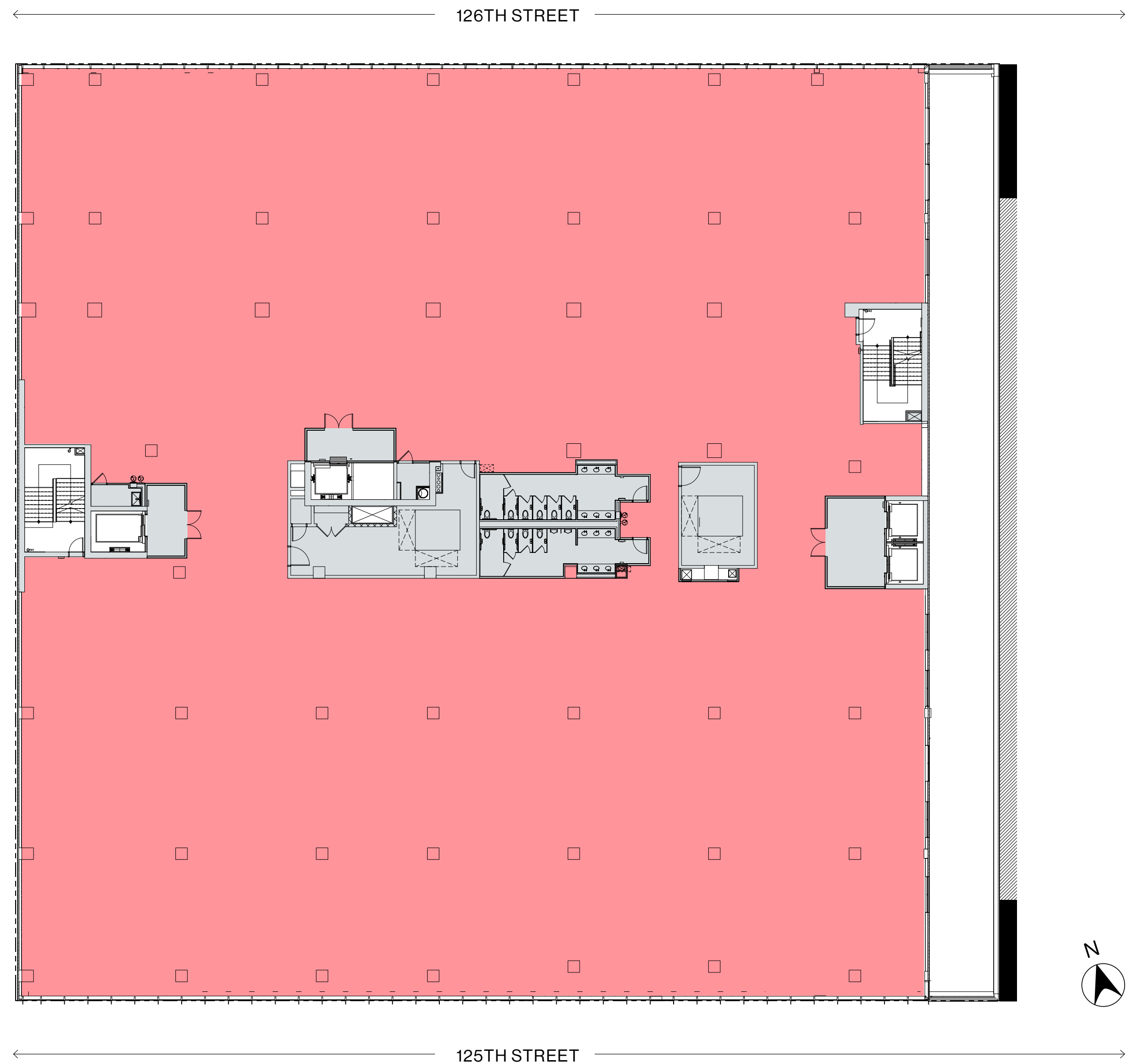
38,000 SF  
Available on 6th Floor

7,500 SF  
6th Floor Terrace

# 5TH FLOOR

## 52,000 SF

- Efficient Floor Plates
- 14' - 16' Ceilings
- Full Floor Open Layouts
- Floor-to-Ceiling Windows
- Unobstructed Views

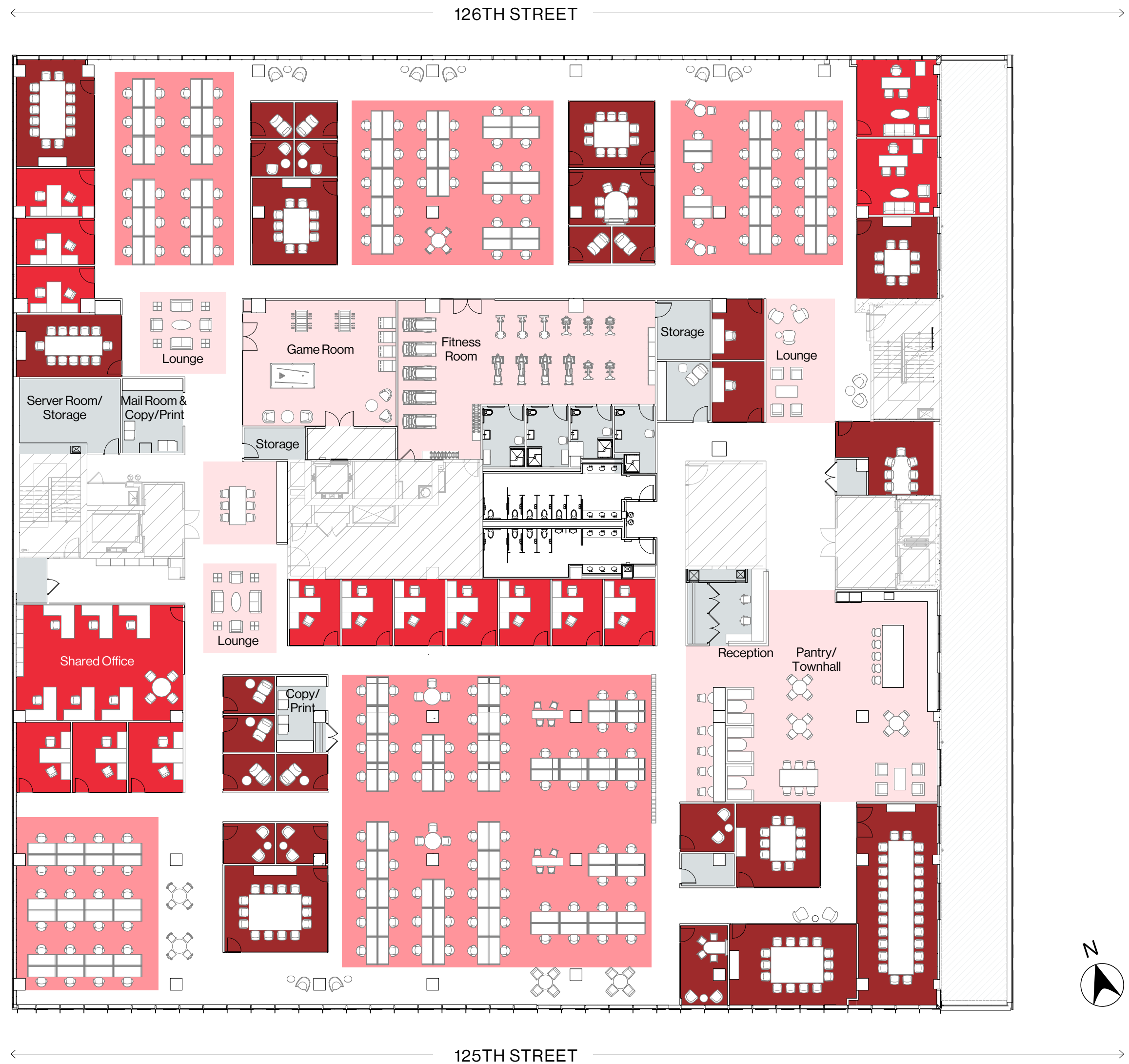


# 5TH FLOOR

## 52,000 SF

### Full Floor

OFFICES	QTY	COLLABORATION	QTY	AMENITIES	QTY
Executive Office	2	Conference Rooms	9	Pantry/Coffee Bar	2
Private Office	13	Phone Room	15	Lounge	3
Shared Office (6-Ppl)	1	Media Room	3	Fitness Room	1
				Game Room	1
WORKSTATIONS	QTY	SUPPORT & STORAGE	QTY	TOTAL	QTY
Benching (72" x 30")	170	Reception (2-Ppl)	1	Head Count	235
		Mail Room & Copy/Print	2		
		Storage	8		
		Wellness Room	1		
		Shower Room	4		



# 5TH FLOOR

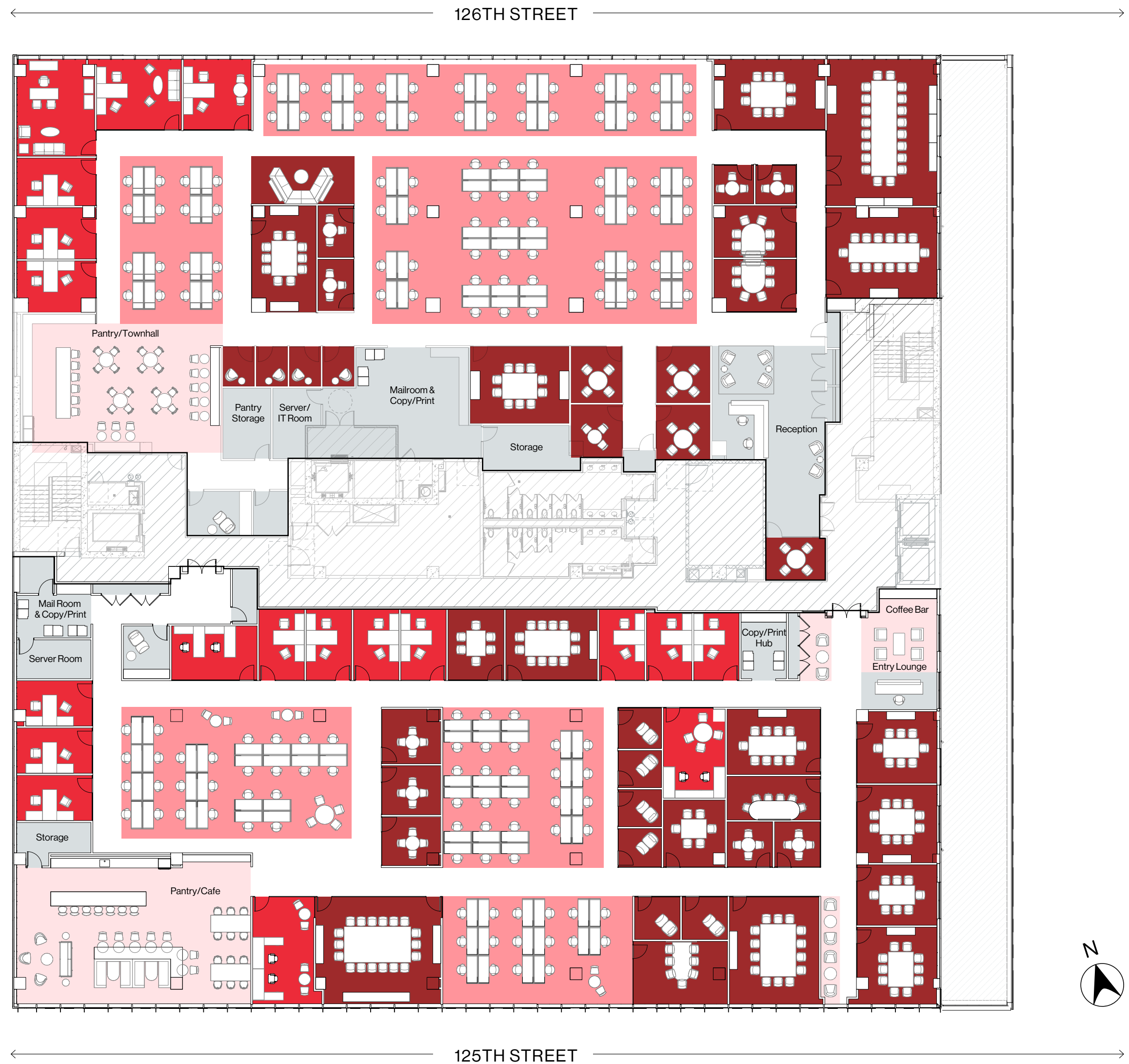
## 52,000 SF

### North Tenant

OFFICES	QTY	COLLABORATION	QTY	SUPPORT & STORAGE	QTY
Private Office	6	Conference Rooms	15	Reception (2-Ppl)	1
		Phone Room	4	Mail Room & Copy/Print	1
		Media Room (6-Ppl)	2	Storage	8
				Wellness Room	1
WORKSTATIONS	QTY	TOTAL	QTY		
Benching (72" x 30")	70	Head Count	78		
AMENITIES	QTY				
Pantry	1				

### South Tenant

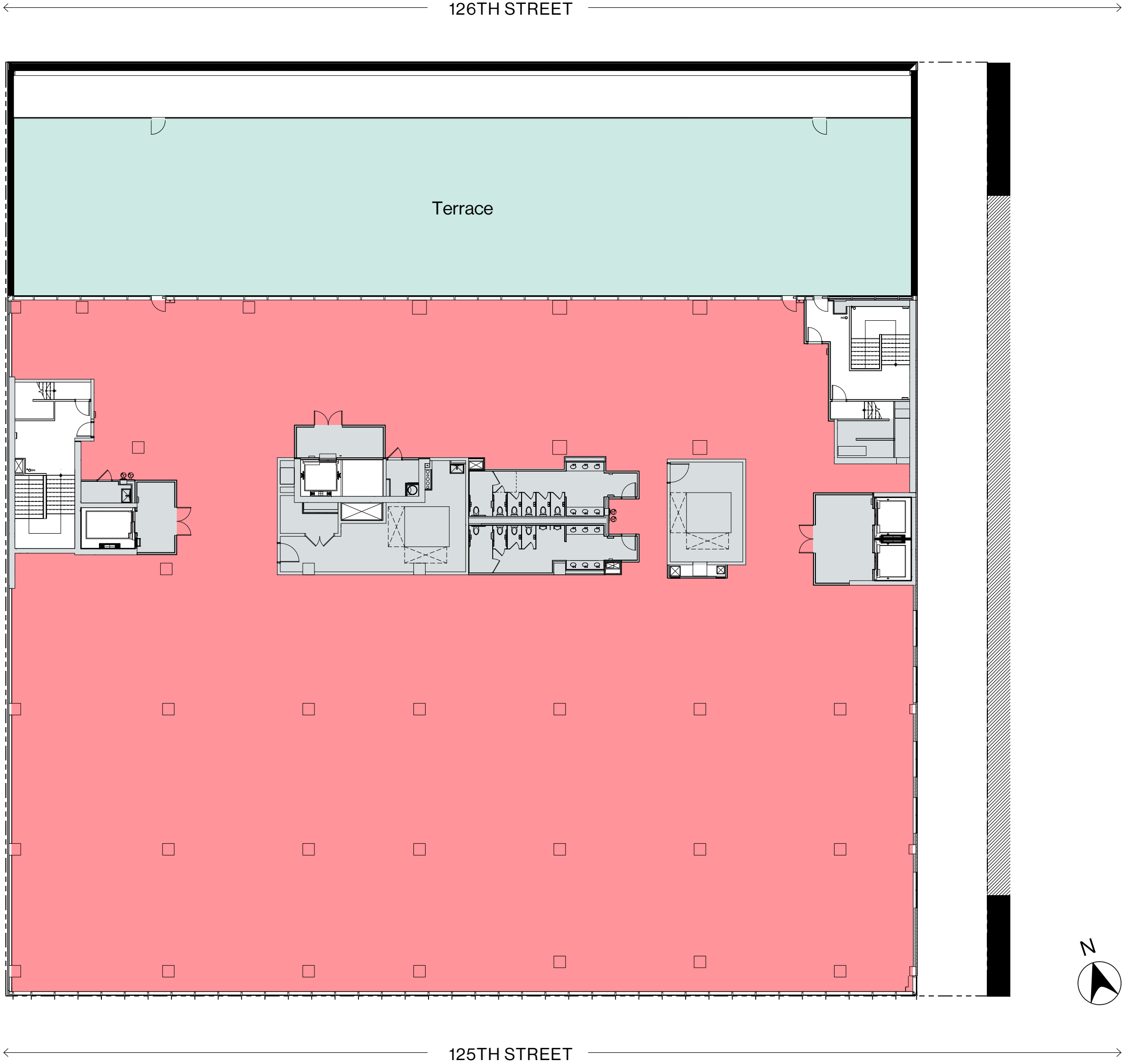
OFFICES	QTY	COLLABORATION	QTY	SUPPORT & STORAGE	QTY
Private Office	10	Conference Rooms	16	Reception (1-Person)	1
Shared Office	3	Phone Room	6	Mail Room & Copy/Print	2
		Media Room	2	Storage	6
				Wellness Room	1
WORKSTATIONS	QTY	TOTAL	QTY		
Benching (72" x 30")	68	Head Count	85		
AMENITIES	QTY				
Pantry/Coffee Bar	2				
Lounge	1				



# 6TH FLOOR

## 38,000 SF

- Full Floor Open Layouts
- 7,500 SF Terrace
- 14' - 16' Ceilings
- Floor-to-Ceiling Windows
- Unobstructed Views

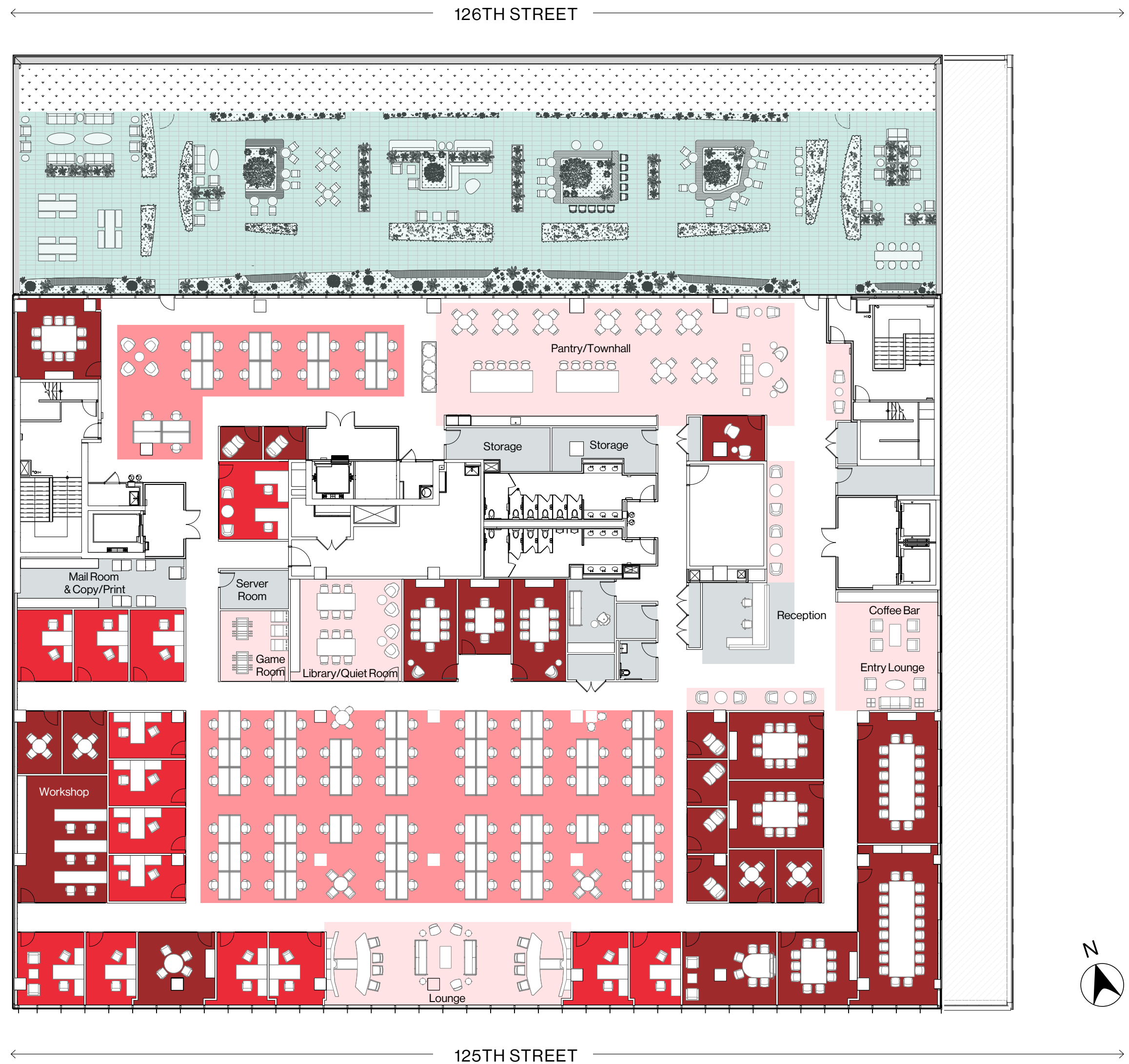


# 6TH FLOOR

## 38,000 SF

### Full Floor

OFFICES	QTY	COLLABORATION	QTY	AMENITIES	QTY
Executive Office	1	Conference Rooms	14	Pantry/Coffee Bar	2
Private Office	12	Phone Room	7	Lounge	2
Shared Office (6-Ppl)	1	Media Room	1	Library/Quiet Room	1
				Workshop	1
				Game Room	1
WORKSTATIONS	QTY	SUPPORT & STORAGE	QTY	TOTAL	QTY
Benching (72" x 30")	103	Reception (2-Ppl)	1	Head Count	119
		Mail Room & Copy/Print	1		
		Storage	9		
		Wellness Room	1		
		ADA Restroom	1		





# 6TH FLOOR

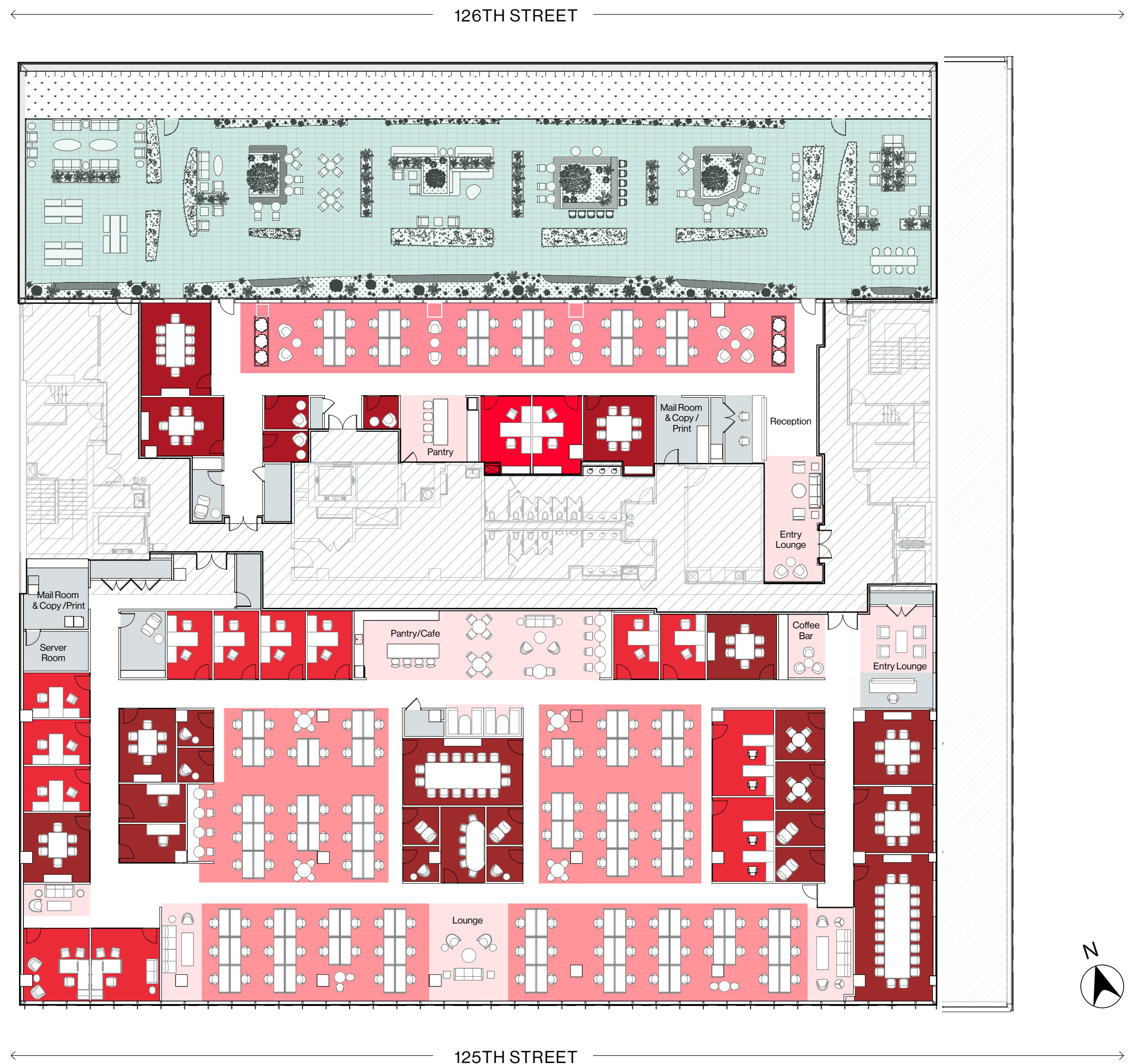
## 38,000 SF

### North Tenant

OFFICES	QTY	COLLABORATION	QTY	SUPPORT & STORAGE	QTY
Private Office	2	Conference Rooms	3	Reception	1
		Phone Room	3	Mail Room & Copy/Print	1
				Storage	3
				Wellness Room	1
WORKSTATIONS	QTY	AMENITIES	QTY		
Benching (72" x 30")	24	Pantry	1		
		Lounge	1		
TOTAL	QTY				
Head Count	27				

### South Tenant

OFFICES	QTY	COLLABORATION	QTY	SUPPORT & STORAGE	QTY
Executive Office	2	Conference Rooms	9	Reception	1
Private Office	9	Phone Room	10	Mail Room & Copy/Print	1
Shared Office	2	Media Room	1	Storage	5
				Wellness Room	1
WORKSTATIONS	QTY	AMENITIES	QTY	TOTAL	QTY
Benching (72" x 30")	102	Pantry/Coffee Bar	2	Head Count	85
		Lounge	2		



---

# Interior Rendering





---

Terrace Rendering

# YOUR *standout* TEAM



---

As a fully integrated owner, operator, and developer of commercial and residential real estate, Taconic has acquired, developed, redeveloped, and repositioned over 12 million square feet of office, mixed-use, and retail space and more than 6,500 residential units with a focus in New York City.

[taconicpartners.com](http://taconicpartners.com)



---

A New York based real estate firm with over 2.4 million square feet of completed real estate projects, 1.6 million square feet currently under construction, and 7.0 million square feet in the pipeline.

[brpcompanies.com](http://brpcompanies.com)



---

At L+M Development Partners, working together to build stronger communities is our mission. Our “double bottom line” philosophy means that we measure success not only in financial returns but also by the positive impacts we make in the communities we serve.

[lmdevpartners.com](http://lmdevpartners.com)



---

The Prusik Group focuses on the development and repositioning of retail real estate assets throughout the Tri-State area. Through the development and repositioning of more than 3.0 million SF of retail, office, and residential projects, the founders have established and continue to foster excellent relationships across the industry and throughout the communities with which they have worked.

[prusikgroup.com](http://prusikgroup.com)

# *for* LEASING

designed by NEOSCAPE®

---

## **Chris Mongeluzo**

Vice Chairman  
212-372-2081  
chris.mongeluzo@nmrk.com

## **Eric Zemachson**

Executive Managing Director  
212-372-2169  
eric.zemachson@nmrk.com

## **Brian Cohen**

Senior Managing Director  
212-372-2178  
brian.cohen@nmrk.com

## **Emma Sukenik**

Associate  
212-359-8528  
emma.sukenik@nmrk.com

## **Jordan Gosin**

Senior Managing Director  
212-372-2289  
jordan.gosin@nmrk.com

## **Chris Ventura**

Director  
212-372-0707  
chris.ventura@nmrk.com

121 West 125th Street New York, NY 10027

**121west125.com**